

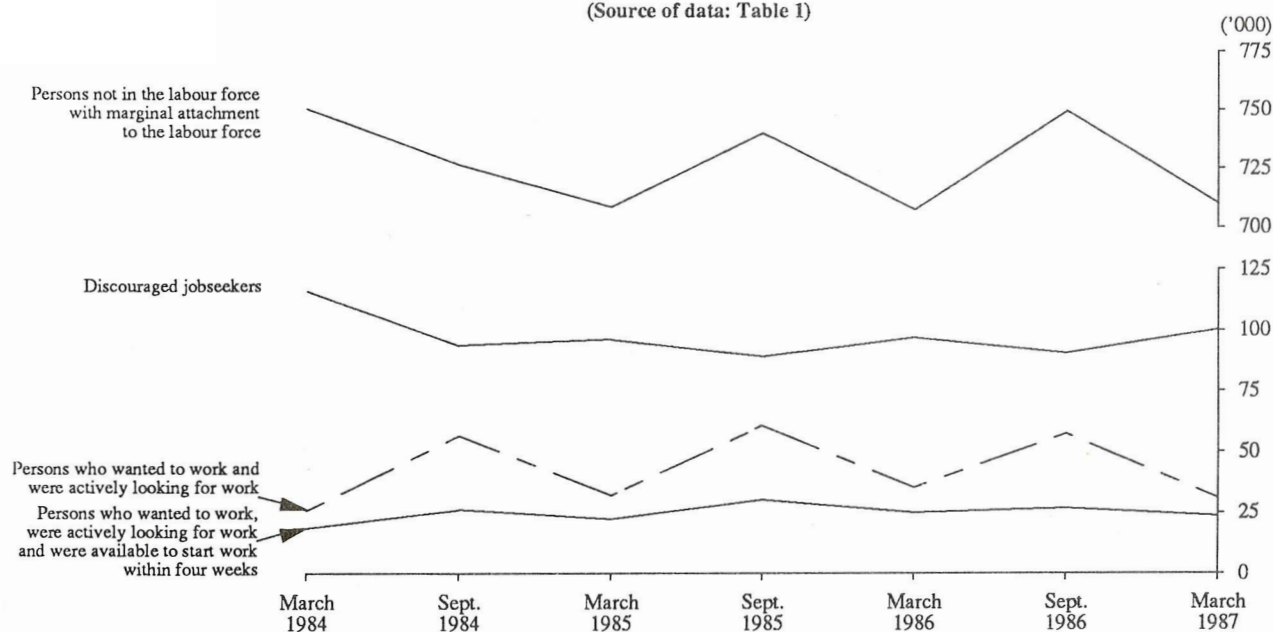


PERSONS NOT IN THE LABOUR FORCE, AUSTRALIA, MARCH 1987, SUMMARY (Previously: Persons Not in the Labour Force, Australia, Preliminary)

- PHONE INQUIRIES • *about these statistics*—contact Ms Sandra Martyn on Canberra (062) 52 6503 or any ABS State office.
 • *about other statistics and ABS services*—contact Information Services on Canberra (062) 52 5402, 52 6007, 52 6627 or any ABS State office.
- MAIL INQUIRIES • *write to Information Services*, ABS, P.O. Box 10, Belconnen, A.C.T. 2616 or any ABS State office.
- ELECTRONIC SERVICES • on VIATEL — key *656#. • on AUSSTATS — phone (062) 52 6017.
 • on TELESTATS — phone (062) 52 5404.

MAIN FEATURES

DIAGRAM 1. PERSONS NOT IN THE LABOUR FORCE WITH MARGINAL ATTACHMENT TO THE LABOUR FORCE, MARCH 1984 TO MARCH 1987
(Source of data: Table I)



Persons not in the labour force, in March 1987 (4,583,100) comprised 37.0 per cent of the civilian population aged 15 and over (12,394,700 persons). Persons with marginal attachment to the labour force (i.e. persons not classed as employed nor unemployed, but who want to work and who meet certain availability criteria) represented 15.5 per cent of persons not in the labour force —unchanged from the proportion estimated in March 1986, and consistent with the apparent seasonal pattern.

An estimated 73.3 per cent of persons with marginal attachment to the labour force wanted to work part-time (55.3 per cent of males and 79.0 per cent of females). Some 57.8 per cent of persons with marginal attachment to the labour force stated that they intend to, or might look for work in the next twelve months — however only 26.1 per cent had looked for work in the past twelve months.

The number of discouraged jobseekers in March 1987 (100,200) is the highest since March 1984. The major reasons discouraged jobseekers gave for not actively looking for work were 'considered too young or too old by employers' (40.3 per cent) and 'no jobs in locality or line of work' (31.4 per cent).

Of the 235,500 persons not in the labour force who wanted to work but were not actively looking for work and were not available to start work within four weeks, 74,500 (31.6 per cent) stated the reason they were not available to start work was due to their 'own ill health or injury, physical disability, or pregnancy' while 67,700 (28.7 per cent) stated their reason was 'children too young or preferred to look after children'.

Note: Survey estimates are subject to sampling variability, as explained in paragraph 24 following.

EXPLANATORY NOTES

Introduction

The monthly Population Survey (which is described in *The Labour Force, Australia* (6203.0)) comprises the monthly labour force survey and supplementary topics. This publication contains some results of a supplementary survey run in association with the March 1987 labour force survey conducted throughout Australia.

2. Of the respondents to the labour force survey, those who fell within the scope of the supplementary survey were asked additional questions. This subset of respondents was asked about their labour force aspirations and, if appropriate, their reasons for not actively looking for work and their availability for work.

Scope

3. The scope of this supplementary survey was the same as that used for the labour force survey (described in full in *The Labour Force, Australia* (6203.0)) except that it was restricted to persons not in the labour force.

Coverage

4. In the Population Survey, coverage rules are applied which aim to ensure that each person is associated with only one dwelling, and hence has only one chance of selection. See *The Labour Force, Australia* (6203.0) for more details.

Definitions

5. Persons not in the labour force are by definition those persons who do not meet the criteria that would enable them to be classified as being in the labour force. To be classified as being in the labour force, a person must be aged 15 or over and be either *employed* or *unemployed*.

6. *Persons not in the labour force*, therefore, include all persons aged 15 and over who are not employed, who want to work but do not meet the criteria to be classified as unemployed; who do not want to work; or who, through incapacity or infirmity, cannot work.

7. The criteria determining those in the labour force are based on actual activity (i.e. working or looking for work) during the survey week. The criteria associated with marginal attachment to the labour force, in particular the concepts of wanting to work, reasons for not actively looking for work and availability to start work, are more subjective and are not based on the respondents' actual activity. Hence, the measurement of these criteria is affected by the respondents' own interpretation of the concepts used. An individual respondent's interpretation is affected by such factors as the respondent's work aspirations, as well as family, economic and other commitments.

8. *Persons with marginal attachment to the labour force* are those who were not in the labour force in the survey week, wanted to work and:

- (a) were actively looking for work but do not meet the criteria to be classified as unemployed; or
- (b) were not actively looking for work but were available to start work within four weeks or could start work within four weeks if childcare was available.

9. *Persons not in the labour force who wanted to work* are those who:

- (a) in the four weeks up to the end of the survey week had taken *active steps* to find work but do not meet the criteria to be classified as unemployed; or
- (b) although claiming to have looked for work in the four weeks up to the end of the survey week, had not taken *active steps* to find work; or
- (c) in the four weeks up to the end of the survey week had not looked for work but in the survey answered 'yes' or 'maybe' to the question '*Even though you have not been looking for work would you like a full-time or part-time job?*'; or
- (d) in the four weeks up to the end of the survey week had not looked for work but were responsible for children under twelve years of age and answered 'yes' or 'maybe' to the question '*If you had child care arrangements for your child(ren) under 12, would you like a job?*'.

10. *Discouraged jobseekers* are those persons with marginal attachment to the labour force who wanted to work and were available to start work within four weeks but whose main reason for not taking active steps to find work was that they believed they would not be able to find a job for any of the following reasons: considered to be too young or too old by employers; difficulties with language or ethnic background; lacked the necessary schooling, training, skills or experience; no jobs in their locality or line of work; or no jobs at all.

11. *Active steps taken to find work* comprise writing, telephoning or applying in person to an employer for work; answering a newspaper advertisement; checking factory or Commonwealth Employment Service noticeboards; being registered with the Commonwealth Employment Service; checking or registering with any other employment agency; advertising or tendering for work; and contacting friends or relatives.

12. *A job* is any paid employment, full-time or part-time, lasting two weeks or more.

13. Unless otherwise stated, all characteristics referenced in this publication relate to the week before the interview.

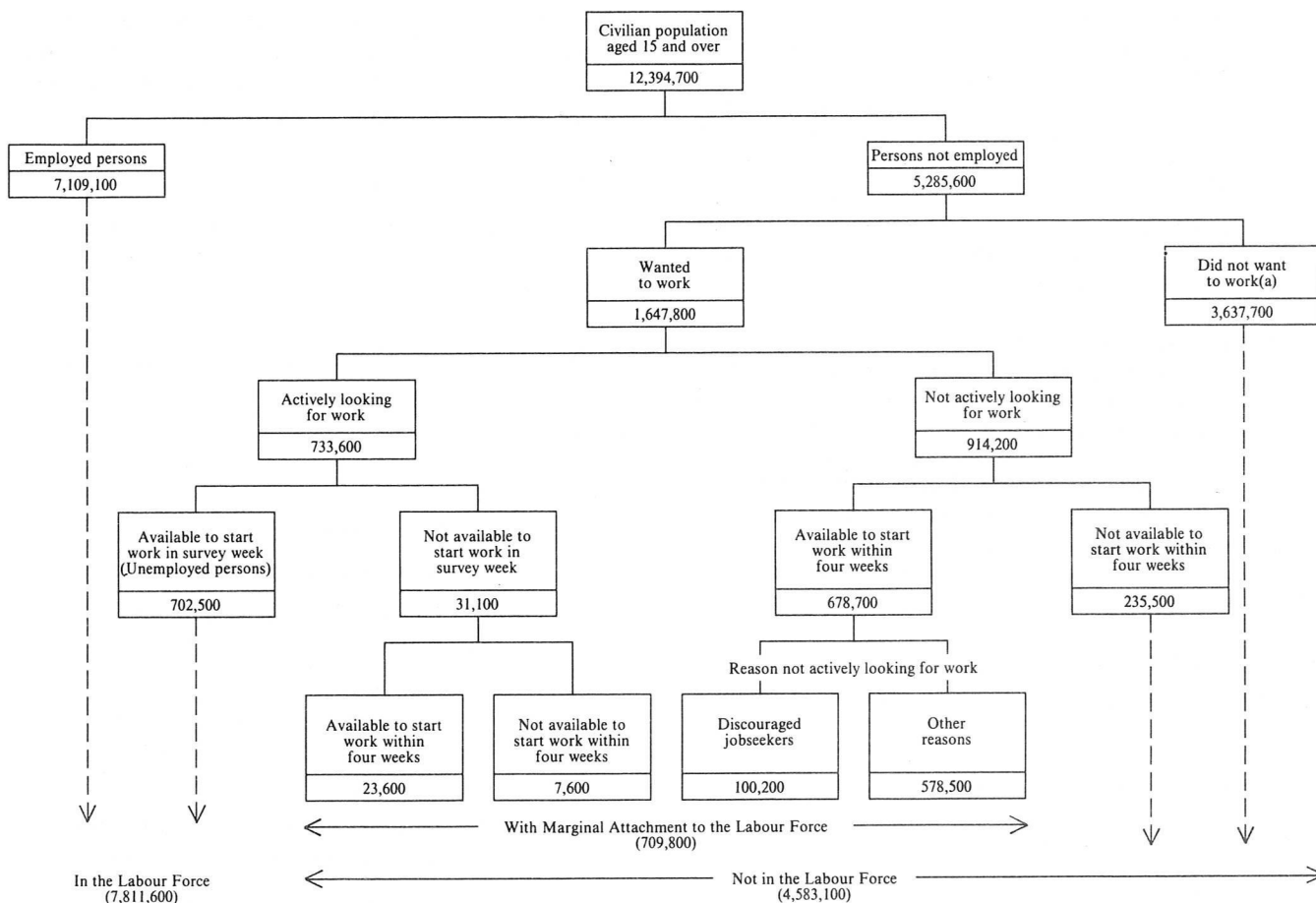
14. Further definitions of labour force and demographic classifications appearing in this publication are given in *The Labour Force, Australia* (6203.0).

15. The various groups of persons either in the labour force or not in the labour force, including those marginally attached to the labour force, are shown schematically in the diagram on the following page.

Results of the survey

16. Estimates of persons not in the labour force are also published in *The Labour Force, Australia* (6203.0). However, more detailed information is contained in this publication.

RELATIONSHIP OF PERSONS WITH MARGINAL ATTACHMENT TO THE LABOUR FORCE TO PERSONS IN OR NOT IN THE LABOUR FORCE, MARCH 1987



(a) Includes institutionalised, boarding school pupils and persons permanently unable to work.

17. Due to differences in the method of estimation used in this supplementary survey and that used in the labour force survey, there are some small variations between estimates in this publication and those in the corresponding issue of *The Labour Force, Australia* (6203.0).

18. The estimates in this publication refer to information collected in the survey month and, due to seasonal factors, may not be representative of other months of the year.

19. This publication contains only a summary of the results of the survey. A more detailed publication will be released as soon as possible, and further information is available on request.

20. Results of similar surveys, which have been conducted each March and September since March 1979, and also in May 1977 and November 1975, have been published in catalogue 6220.0.

21. It is proposed that this survey will be conducted next in March 1988.

Discontinuities in the series

22. New or amended concepts were introduced in the September 1983 survey, causing a break in series. These modifications included the addition of certain groups of

persons excluded from previous *Persons Not in the Labour Force* surveys, several alterations to the order and wording of questions and several alterations to definitions used in the survey.

23. Estimates for September 1986 and March 1987 contained in this publication are based on a revised labour force questionnaire introduced in April 1986. The definition of employment was expanded resulting in a slight decrease in the estimate of persons not in the labour force. Further information is contained in *The Labour Force, Australia* (6203.0) and in an information paper *Questionnaires Used in the Labour Force Survey* (6232.0). Although estimates for previous years have not been revised in this publication, the April 1986 issue of *The Labour Force, Australia* (6203.0) contains revised estimates for persons not in the labour force back to March 1985.

Reliability of the estimates

24. Estimates in this publication are subject to two sources of error:

- (a) *sampling error*: since the estimates are based on information obtained from occupants of a sample of dwellings, they may differ from those which would have been produced if all dwellings had been included in the survey. One measure of the

likely difference is given by the *standard error*. More information about this topic is contained in *The Labour Force, Australia* (6203.0). A table of estimated standard errors for this survey follows these notes. Estimates with a standard error of more than about 25 per cent have not been shown in this publication, as the degree of sampling variability would seriously detract from their value for most reasonable uses. Although, in some cases, estimates for these small components can be derived by subtraction they should not be regarded as reliable.

- (b) *non-sampling error*: inaccuracies may occur because of imperfections in reporting by interviewers and respondents and errors made in coding and processing data. These inaccuracies may occur in any enumeration, whether it be a full count or a sample. Every effort is made to reduce the non-sampling error to a minimum by careful design of questionnaires, intensive training and supervision of interviewers and efficient operating procedures.

Related publications

25. Other ABS publications which may be of interest include:

The Labour Force, Australia (6203.0)—issued monthly

Labour Force Experience, Australia, during the year ending February 1986 (6206.0)—issued annually

Underemployed Workers, Australia, May 1985 (6265.0)—issued irregularly

Job Search Experience of Unemployed Persons, Australia, June 1986 (6222.0)—issued two yearly

Employment, Underemployment and Unemployment 1966-1983, Australia (6246.0)—issued irregularly

Successful and Unsuccessful Job Search Experience, Australia, June 1986 (6245.0)—issued irregularly

26. Current publications produced by the ABS are listed in the *Catalogue of Publications, Australia* (1101.0). The ABS also issues, on Tuesdays and Fridays, a *Publications Advice* (1105.0) which lists publications to be released in the next few days. The Catalogue and Publications Advice are available from any ABS office.

Symbols and other usages

- * subject to sampling variability too high for most practical uses. See paragraph 24 above.
- .. not applicable.

27. Because estimates have been rounded, discrepancies may occur between sums of the component items and totals.

Electronic services

28. VIATEL. Key *656# for selected current economic, social and demographic statistics.

AUSSTATS. Thousands of up-to-date time series are available on this ABS on-line service through CSIRONET.

For further information phone the AUSSTATS Help Desk on (062) 52 6017.

TELESTATS. This service provides foreign trade statistics tailored to users' requirements.

Further information is available on (062) 52 5404.

IAN CASTLES
Australian Statistician

STANDARD ERRORS OF ESTIMATES

Size of estimate	Number	Relative standard error (per cent)	Size of estimate	Number	Relative standard error (per cent)
4,000	970	24.3	100,000	4,400	4.4
4,500	1,050	22.9	200,000	5,800	2.9
5,000	1,100	21.8	300,000	6,800	2.3
6,000	1,200	19.9	500,000	8,300	1.7
10,000	1,550	15.4	1,000,000	10,700	1.1
20,000	2,150	10.7	2,000,000	13,600	0.7
50,000	3,250	6.5	5,000,000	18,300	0.4

**TABLE 1. CIVILIAN POPULATION AGED 15 AND OVER : LABOUR FORCE STATUS,
MARCH 1984 TO MARCH 1987
(' 000)**

	March 1984	Sept. 1984	March 1985	Sept. 1985	March 1986	Sept. 1986	March 1987
Civilian population aged 15 and over	11,718.5	11,808.0	11,897.3	11,998.5	12,121.7	12,249.5	12,394.7
Employed	6,504.2	6,572.9	6,634.5	6,783.9	6,926.3	7,007.6	7,109.1
Unemployed	701.0	621.3	671.7	587.7	640.4	631.6	702.5
Persons not in the labour force	4,513.2	4,613.8	4,591.1	4,626.9	4,555.1	4,610.3	4,583.1
With marginal attachment to the labour force	750.0	726.3	708.3	739.7	707.3	749.4	709.8
Wanted to work and were actively looking for work	25.7	56.4	32.1	60.4	35.2	57.2	31.1
Were available to start work within four weeks	18.7	26.2	22.2	30.2	25.0	26.9	23.6
Were not available to start work within four weeks	7.0	30.2	9.9	30.2	10.2	30.3	7.6
Wanted to work but were not actively looking for work and were available to start work within four weeks	724.3	669.9	676.3	679.4	672.1	692.1	678.7
Discouraged jobseekers	116.1	93.7	96.0	89.0	96.8	90.5	100.2
Other	608.2	576.2	580.3	590.4	575.3	601.6	578.5
Without marginal attachment to the labour force	3,763.3	3,887.6	3,882.8	3,887.1	3,847.8	3,860.9	3,873.3
Wanted to work but were not actively looking for work and were not available to start work within four weeks	224.0	264.1	222.7	265.2	261.4	262.7	235.5
Did not want to work	3,275.2	3,365.6	3,399.1	3,380.1	3,340.8	3,345.3	3,368.8
Permanently unable to work	52.3	56.5	54.4	47.8	51.1	57.2	46.8
Institutionalised(a) and boarding school pupils	211.8	201.4	206.6	194.1	194.4	195.8	222.1

(a) Includes some patients in hospitals and sanatoria and inmates of reformatories, jails etc.

**TABLE 2. PERSONS NOT IN THE LABOUR FORCE WITH MARGINAL ATTACHMENT TO THE LABOUR FORCE:
MAIN REASON FOR NOT ACTIVELY LOOKING FOR WORK, MARCH 1984 TO MARCH 1987
(' 000)**

	March 1984	Sept. 1984	March 1985	Sept. 1985	March 1986	Sept. 1986	March 1987
Wanted to work and were actively looking for work	25.7	56.4	32.1	60.4	35.2	57.2	31.1
Were available to start work within four weeks	18.7	26.2	22.2	30.2	25.0	26.9	23.6
Were not available to start work within four weeks	7.0	30.2	9.9	30.2	10.2	30.3	7.6
Wanted to work but were not actively looking for work and were available to start work within four weeks	724.3	669.9	676.3	679.4	672.1	692.1	678.7
Main reason for not actively looking for work							
Had a job to go to	10.3	8.8	9.1	11.2	11.7	9.9	11.1
Personal reasons	265.5	241.8	263.5	256.2	251.0	249.9	265.7
Own ill health, physical disability, pregnancy	62.2	60.6	65.8	69.1	63.0	56.5	63.7
Attending an educational institution	104.8	93.4	104.9	102.3	111.1	106.9	119.8
Had no need to work	49.5	41.5	44.7	41.3	38.2	40.0	38.9
Give others a chance	11.0	9.3	9.1	6.2	4.5	7.4	5.5
Welfare payments/pension may be affected	21.7	17.4	24.2	19.6	19.6	21.3	22.1
Moved house/holidays	16.3	19.6	14.7	17.8	14.7	17.8	15.6
Family reasons	262.5	263.1	238.2	248.4	241.4	267.3	239.3
Ill health of other than self	10.1	15.2	11.0	14.8	12.9	11.6	13.1
Unable to find suitable childcare		76.3	73.6	72.5	70.1	72.6	68.2
Children too young/preferred to look after children	212.1	132.9	115.0	126.1	117.5	140.2	117.2
Other family considerations	40.3	38.7	38.6	34.9	40.9	43.0	40.8
Discouraged jobseekers	116.1	93.7	96.0	89.0	96.8	90.5	100.2
Considered too young or too old by employers	34.5	26.9	31.0	32.2	37.6	31.3	40.4
Difficulties with language or ethnic background	*	5.7	4.7	5.0	5.2	4.0	4.2
Lacked necessary schooling, training, skills or experience	10.0	8.9	11.2	8.9	11.5	10.2	12.5
No jobs in locality or line of work	40.7	29.0	33.0	26.0	29.1	33.3	31.5
No jobs at all	27.1	23.2	16.1	16.8	13.4	11.7	11.6
No jobs in suitable hours	22.9	19.3	17.7	18.4	17.5	16.5	11.8
Other reasons	28.2	29.5	29.7	36.4	34.6	40.9	29.1
Did not know	9.5	4.2	10.3	8.0	9.0	6.6	9.0
Not asked(a)	9.3	9.5	11.9	12.0	10.1	10.7	12.4
Total	750.0	726.3	708.3	739.7	707.3	749.4	709.8

(a) Persons who had a job but, up to the end of the survey week, had been away from work without pay for four weeks or longer and had not been actively looking for work.

TABLE 3. PERSONS NOT IN THE LABOUR FORCE WITH MARGINAL ATTACHMENT TO THE LABOUR FORCE : SUMMARY OF CHARACTERISTICS, MARCH 1987 ('000)

	Persons who wanted to work and were actively looking for work			Persons who wanted to work but were not actively looking for work and were available to start work within four weeks			Persons with marginal attachment to the labour force		
	Were available to start work within four weeks	Were not available to start work within four weeks	Total	Discouraged jobseekers	Other	Total	Males	Females	Persons
<i>Age group—</i>									
15-19	4.9	*	7.3	6.7	123.0	129.7	66.5	70.5	137.0
20-24	*	*	4.3	*	52.9	56.1	15.0	45.3	60.4
25-34	7.7	*	8.7	11.7	164.8	176.5	16.1	169.1	185.3
35-44	4.5	*	6.6	21.8	117.2	139.0	14.7	130.8	145.5
45-54	*	*	*	18.6	60.3	78.9	13.4	67.0	80.4
55-59	*	*	*	11.3	24.9	36.1	10.7	27.0	37.7
60-64	*	*	*	11.9	16.5	28.4	16.4	13.2	29.6
65 and over	*	*	*	15.2	18.8	34.0	19.7	14.3	34.0
<i>Family status—</i>									
Member of a family	17.9	6.4	24.4	80.7	515.7	596.4	139.7	481.0	620.8
Husband or wife	9.1	*	11.6	59.8	325.7	385.5	60.9	336.2	397.1
With dependents present	6.6	*	8.5	27.6	247.4	275.1	22.0	261.6	283.6
Without dependents present	*	*	*	32.2	78.3	110.5	38.9	74.7	113.5
Not-married family head	*	*	*	11.7	66.5	78.2	*	77.7	81.5
With dependents present	*	*	*	7.7	61.3	69.0	*	69.5	72.2
Without dependents present	*	*	*	4.0	5.2	9.2	*	8.2	9.4
Full-time student aged 15-24 (a)	*	*	4.1	4.2	106.5	110.8	61.6	53.2	114.8
Other child(b) of family head	*	*	4.1	*	14.8	18.0	12.0	10.2	22.2
Other relative of family head	*	*	*	*	*	*	*	*	5.1
Not a member of a family	*	*	4.2	13.4	32.4	45.7	22.2	27.8	50.0
Living alone	*	*	*	11.4	19.1	30.5	13.5	18.6	32.1
Not living alone	*	*	*	*	13.3	15.2	8.7	9.2	17.9
Family status not determined	*	*	*	6.1	30.5	36.5	10.7	28.4	39.1
<i>Type of work preferred—</i>									
Full-time	11.4	*	14.6	25.1	115.3	140.4	67.5	87.5	155.0
Part-time	11.7	4.1	15.8	65.1	439.3	504.4	95.5	424.6	520.2
No preference	*	*	*	10.0	23.8	33.8	9.5	25.1	34.6
<i>Whether looked for work in the last 12 months (c)—</i>									
Had looked for work	23.6	7.6	31.1	34.3	120.2	154.5	57.4	128.3	185.6
Less than 5 weeks ago	23.6	7.6	31.1	9.3	31.5	40.8	24.2	47.7	71.9
5 and less than 8 weeks ago	10.7	37.2	47.9	15.8	32.0	47.9
8 and less than 13 weeks ago	6.4	22.7	29.0	8.0	21.0	29.0
13 to 52 weeks ago	7.9	28.9	36.8	9.4	27.4	36.8
Had not looked for work	65.9	458.3	524.2	115.2	409.0	524.2
<i>Time since last job(d)—</i>									
Had had a job	20.6	6.2	26.7	92.3	483.2	575.5	127.4	474.8	602.2
Under 12 months	13.0	*	15.4	16.1	138.3	154.5	62.2	107.6	169.9
Under 6 months	9.8	*	11.7	7.8	102.9	110.7	49.2	73.2	122.4
6 and under 12 months	*	*	*	8.3	35.5	43.8	13.0	34.5	47.5
1 and under 3 years	*	*	4.5	16.5	97.2	113.7	25.0	93.2	118.2
3 and under 5 years	*	*	*	15.2	61.9	77.1	16.3	62.7	79.0
5 and under 10 years	*	*	*	19.2	96.3	115.5	16.8	102.6	119.4
10 and under 20 years	*	*	*	16.8	71.3	88.1	6.3	82.5	88.8
20 years or more	*	*	*	8.4	18.1	26.6	*	26.1	26.8
Had never had a job	*	*	4.4	7.9	94.4	102.2	45.0	61.7	106.7
<i>Reason for ceasing last job(d)—</i>									
Had had a job	20.6	6.2	26.7	92.3	470.8	563.0	123.8	465.9	589.8
Job loser	9.3	*	11.9	38.5	141.5	180.0	56.1	135.9	192.0
Retrenched	4.0	*	5.1	20.2	49.5	69.7	21.2	53.5	74.8
Job was temporary or seasonal and did not leave to return to studies	*	*	*	8.2	39.7	47.9	10.1	40.9	51.0
Own ill health or injury	*	*	*	7.4	47.4	54.8	21.9	36.2	58.1
Business closed down for economic reasons	*	*	*	*	5.0	7.6	*	5.3	8.1
Job leaver	11.2	*	14.8	53.8	329.2	383.0	67.8	330.0	397.8
Unsatisfactory work arrangements	*	*	*	6.2	25.7	31.9	10.3	24.6	34.8
Job was temporary or seasonal and left to return to studies	*	*	*	*	10.9	10.9	7.0	4.6	11.6
Retired/didn't want to work any longer	*	*	*	12.7	28.7	41.4	21.0	20.6	41.6
Returned to studies	*	*	*	*	20.6	21.7	14.7	8.3	23.0
To get married	*	*	*	5.3	31.4	36.7	*	37.7	37.7
Pregnancy/to have children	*	*	*	11.2	120.2	131.4	*	134.9	135.2
To look after family, house or someone else	*	*	*	5.1	32.1	37.3	*	36.5	38.2
To have holiday/to move house/spouse transferred	*	*	*	8.3	40.8	49.1	6.4	45.4	51.8
Business closed down for other reasons	*	*	*	*	8.2	9.3	*	6.6	10.0
Other	*	*	*	*	10.7	13.3	*	10.9	14.0
Had never had a job	*	*	4.4	7.9	94.4	102.2	45.0	61.7	106.7
Not asked(e)	12.4	12.4	*	8.9	12.4
Total	23.6	7.6	31.1	100.2	578.5	678.7	172.6	537.3	709.8

(a) Excludes persons aged 20-24 attending school. (b) Aged 15 and over. (c) Persons who had left a job in the last twelve months were only asked whether they had looked for work since that job. (d) Excludes unpaid voluntary workers. (e) Persons who had a job but, up to the end of survey week, had been away from work without pay for four weeks or longer and had not been actively looking for work.

TABLE 4. PERSONS NOT IN THE LABOUR FORCE WITH MARGINAL ATTACHMENT TO THE LABOUR FORCE: MAIN REASON FOR NOT ACTIVELY LOOKING FOR WORK, INTENTION TO LOOK FOR WORK IN THE NEXT TWELVE MONTHS AND TYPE OF WORK PREFERRED, MARCH 1987 ('000)

	<i>Intention to look for work in the next twelve months</i>					<i>Type of work preferred</i>			<i>Total</i>
	<i>Intended to look</i>	<i>Might look</i>	<i>Did not intend to look</i>	<i>Did not know</i>	<i>Not asked(a)</i>	<i>Full-time</i>	<i>Part-time</i>	<i>No preference</i>	
Wanted to work and were actively looking for work	31.1	14.6	15.8	*	31.1
Were available to start work within four weeks	23.6	11.4	11.7	*	23.6
Were not available to start work within four weeks	7.6	*	4.1	*	7.6
Wanted to work but were not actively looking for work and were available to start work within four weeks	285.9	124.2	214.1	31.0	23.5	140.4	504.4	33.8	678.7
<i>Main reason for not actively looking for work</i>									
Had a job to go to	11.1	5.2	5.4	*	11.1
Personal reasons	130.9	44.9	79.9	10.1	..	64.8	191.1	9.8	265.7
Own ill health, physical disability, pregnancy	25.5	12.7	22.8	*	..	16.0	43.9	*	63.7
Attending an educational institution	79.0	17.0	21.1	*	..	35.2	83.1	*	119.8
Had no need to work	8.4	7.1	20.7	*	..	*	34.1	*	38.9
Give others a chance	*	*	*	*	..	*	4.9	*	5.5
Welfare payments/pension may be affected	*	5.8	11.2	*	..	4.3	16.4	*	22.1
Moved house/holidays	13.7	*	*	*	..	5.8	8.7	*	15.6
Family reasons	81.0	53.6	90.4	14.3	..	28.7	202.1	8.5	239.3
Ill health of other than self	4.9	*	4.7	*	..	*	10.5	*	13.1
Unable to find suitable childcare	17.7	12.7	34.2	*	..	9.0	56.4	*	68.2
Children too young/preferred to look after children	41.9	27.9	41.1	6.4	..	12.2	101.0	4.0	117.2
Other family considerations	16.6	10.4	10.4	*	..	5.0	34.2	*	40.8
Discouraged jobseekers	44.5	16.9	34.8	*	..	25.1	65.1	10.0	100.2
Considered too young or too old by employers	10.6	6.9	21.4	*	..	6.5	30.4	*	40.4
Difficulties with language or ethnic background	*	*	*	*	..	*	*	*	4.2
Lacked necessary schooling, training, skills or experience	6.8	*	*	*	..	4.5	6.1	*	12.5
No jobs in locality or line of work	16.8	5.9	7.2	*	..	9.7	18.7	*	31.5
No jobs at all	7.6	*	*	*	..	*	7.3	*	11.6
No jobs in suitable hours	7.3	*	*	*	..	*	10.9	*	11.8
Other reasons	17.7	5.0	5.4	*	..	8.6	18.5	*	29.1
Did not know	4.6	*	*	*	..	*	5.7	*	9.0
Not asked(b)	12.4	5.3	5.6	*	12.4
Total	285.9	124.2	214.1	31.0	54.7	155.0	520.2	34.6	709.8

(a) Comprises persons who had a job to go to, persons who took active steps to find work and persons as defined in footnote(b). (b) Persons who had a job but, up to the end of the survey week, had been away from work without pay for four weeks or longer and had not been actively looking for work.

TABLE 5. PERSONS NOT IN THE LABOUR FORCE WHO WANTED TO WORK BUT WERE NOT ACTIVELY LOOKING FOR WORK AND WERE NOT AVAILABLE TO START WORK WITHIN FOUR WEEKS: REASON NOT AVAILABLE TO START WORK WITHIN FOUR WEEKS, INTENTION TO LOOK FOR WORK IN THE NEXT TWELVE MONTHS AND TYPE OF WORK PREFERRED, MARCH 1987 ('000)

<i>Reason not available to start work within four weeks</i>	<i>Intention to look for work in the next twelve months</i>					<i>Type of work preferred</i>			<i>Total</i>
	<i>Intended to look</i>	<i>Might look</i>	<i>Did not intend to look</i>	<i>Did not know</i>	<i>Not asked(a)</i>	<i>Full-time</i>	<i>Part-time</i>	<i>No preference</i>	
Personal reasons	42.4	24.3	44.7	6.9	6.8	53.4	63.7	8.0	125.0
Own ill health or injury, physical disability, or pregnancy	17.0	16.0	30.4	5.2	5.8	31.7	35.6	7.2	74.5
Studying	20.0	6.0	11.0	*	*	19.4	18.9	*	39.1
At school	11.6	4.3	8.0	*	*	11.5	13.0	*	25.3
Other educational institution	8.4	*	*	*	*	7.8	5.9	*	13.7
Moved house/holidays	5.4	*	*	*	*	*	9.1	*	11.5
Family reasons	15.7	12.2	52.3	9.1	8.0	14.2	72.4	4.6	91.2
Ill health of other than self	*	*	6.9	*	*	*	8.3	*	12.3
Unable to find suitable childcare	*	*	6.9	*	*	*	8.4	*	11.2
Children too young/preferred to look after children	11.5	9.1	38.5	*	7.0	9.2	55.7	*	67.7
Other reasons	*	*	10.7	*	*	6.1	11.9	*	19.3
Total	62.1	39.5	107.7	10.3	16.0	73.7	147.9	13.9	235.5
Males	18.6	12.8	20.1	*	*	32.0	19.3	5.4	56.7
Females	43.5	26.7	87.6	7.5	13.6	41.7	128.6	8.6	178.9

(a) Persons who had a job but, up to the end of the survey week, had been away from work without pay for four weeks or longer and had not been actively looking for work.

